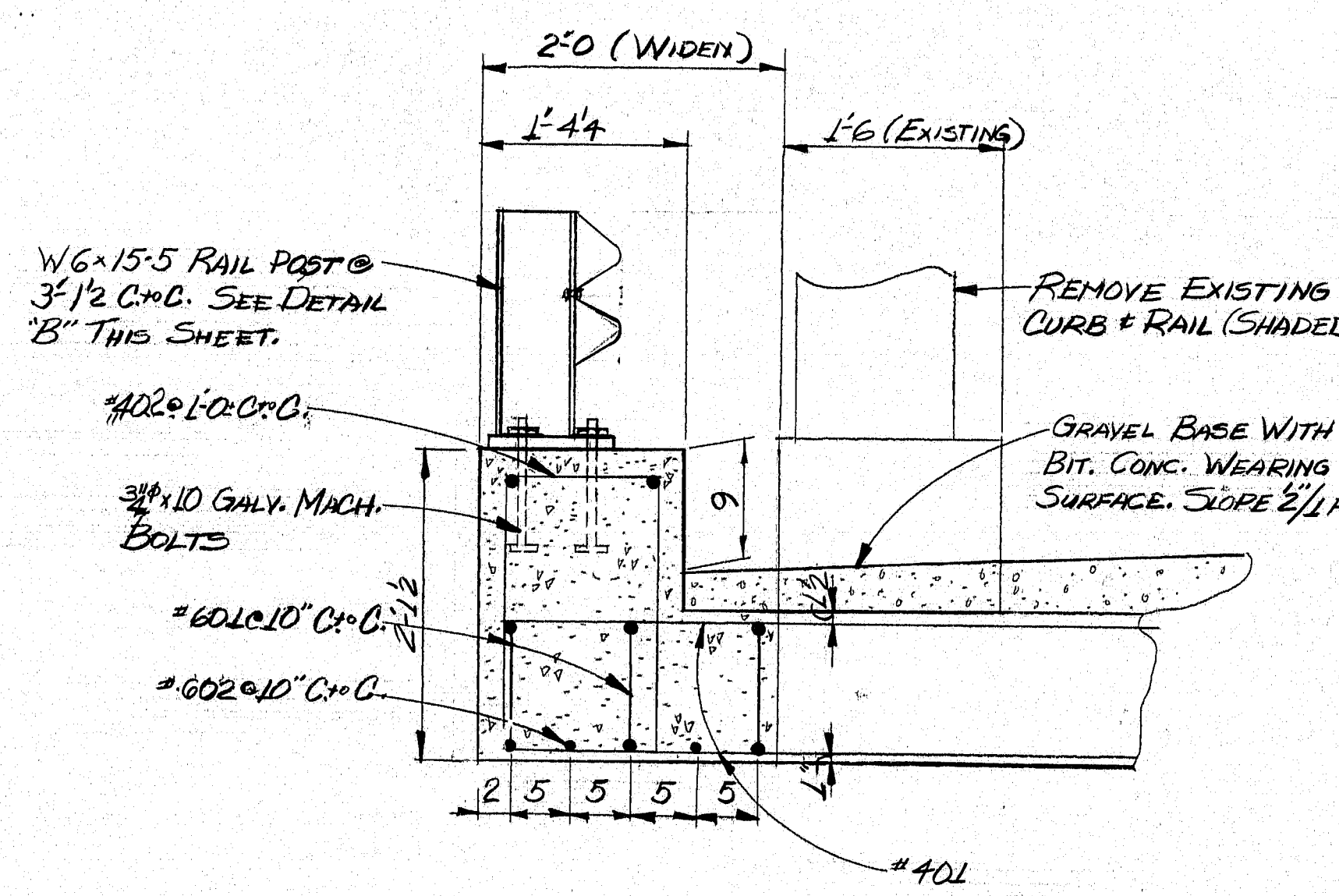
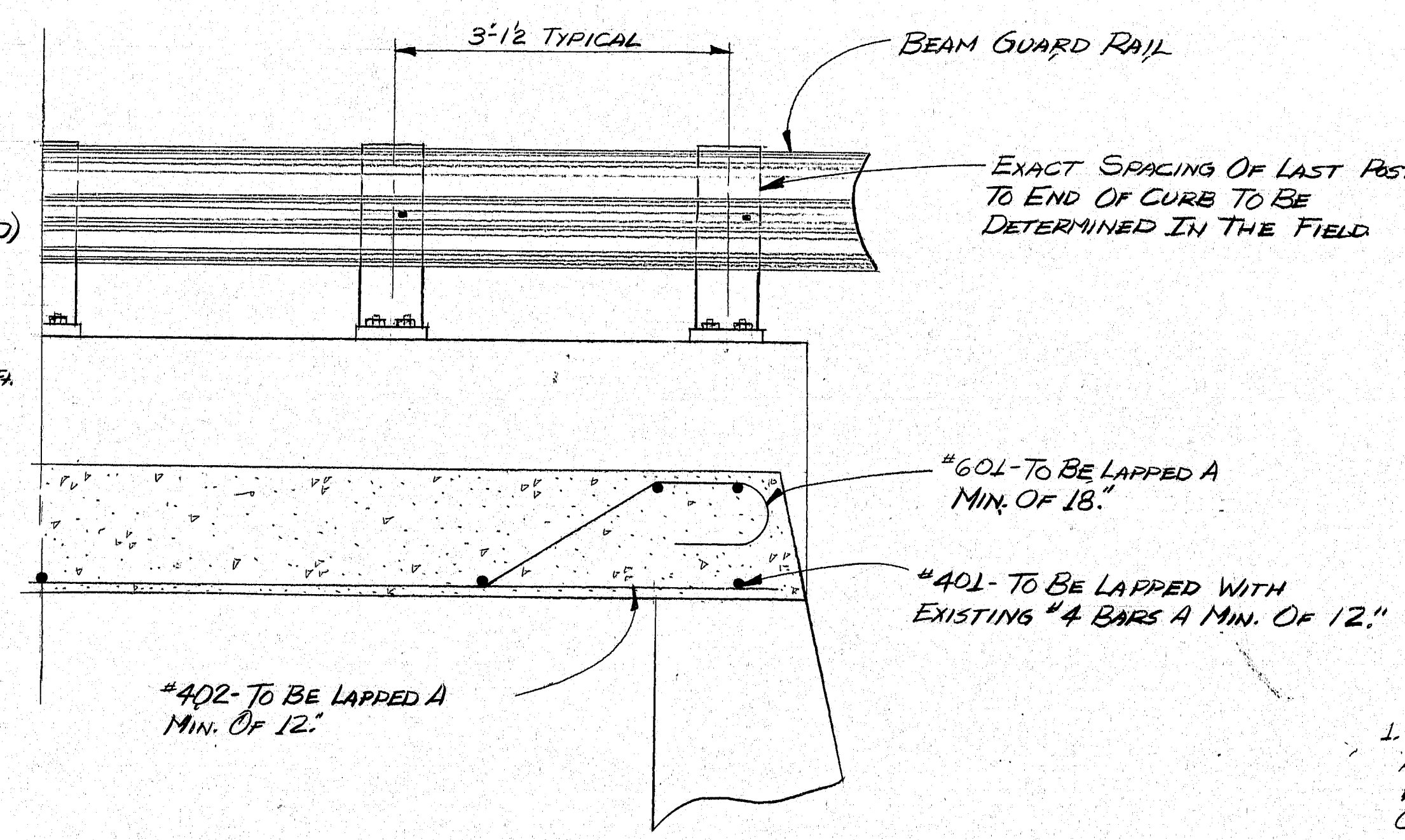


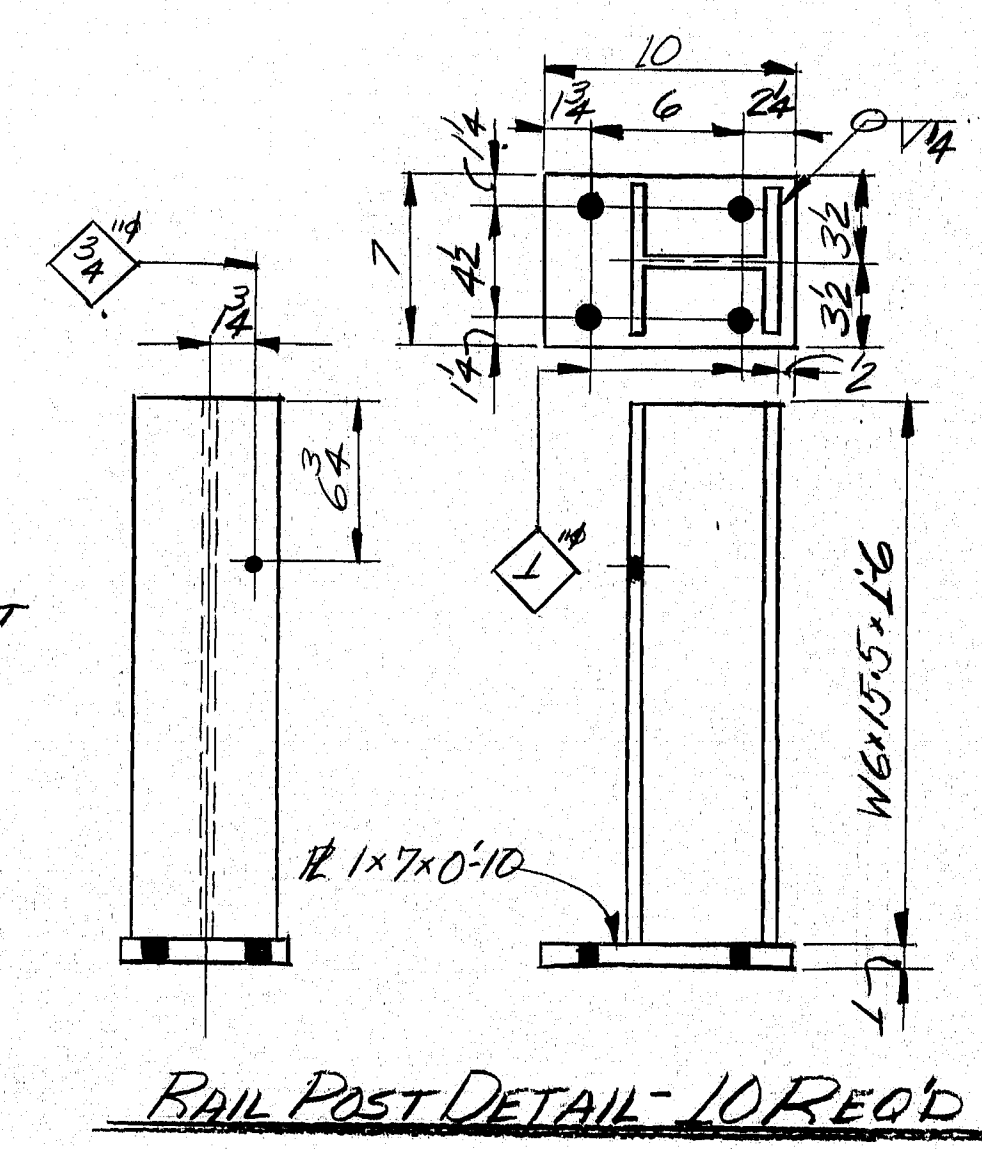
PRJ. NO.	STATE	PROJECT NUMBER	SHEET NO.	TOTAL SHEETS
1	MAINE			



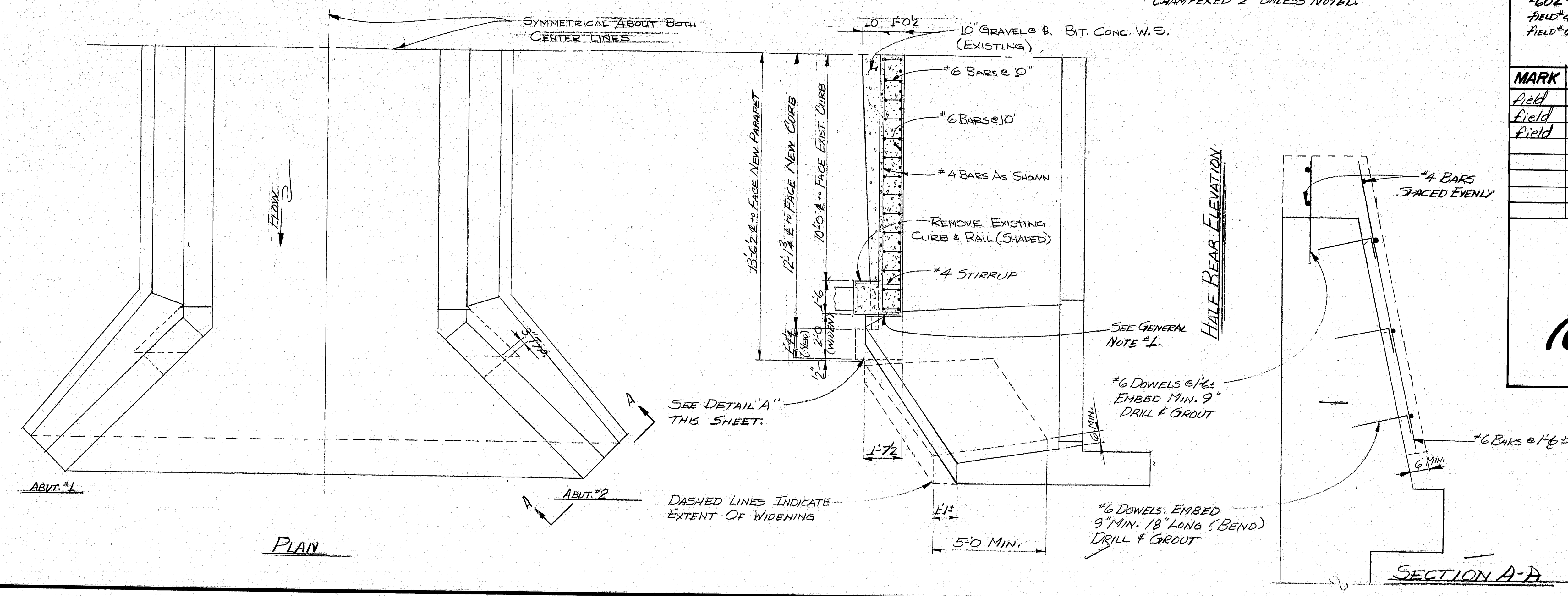
DETAIL "A"



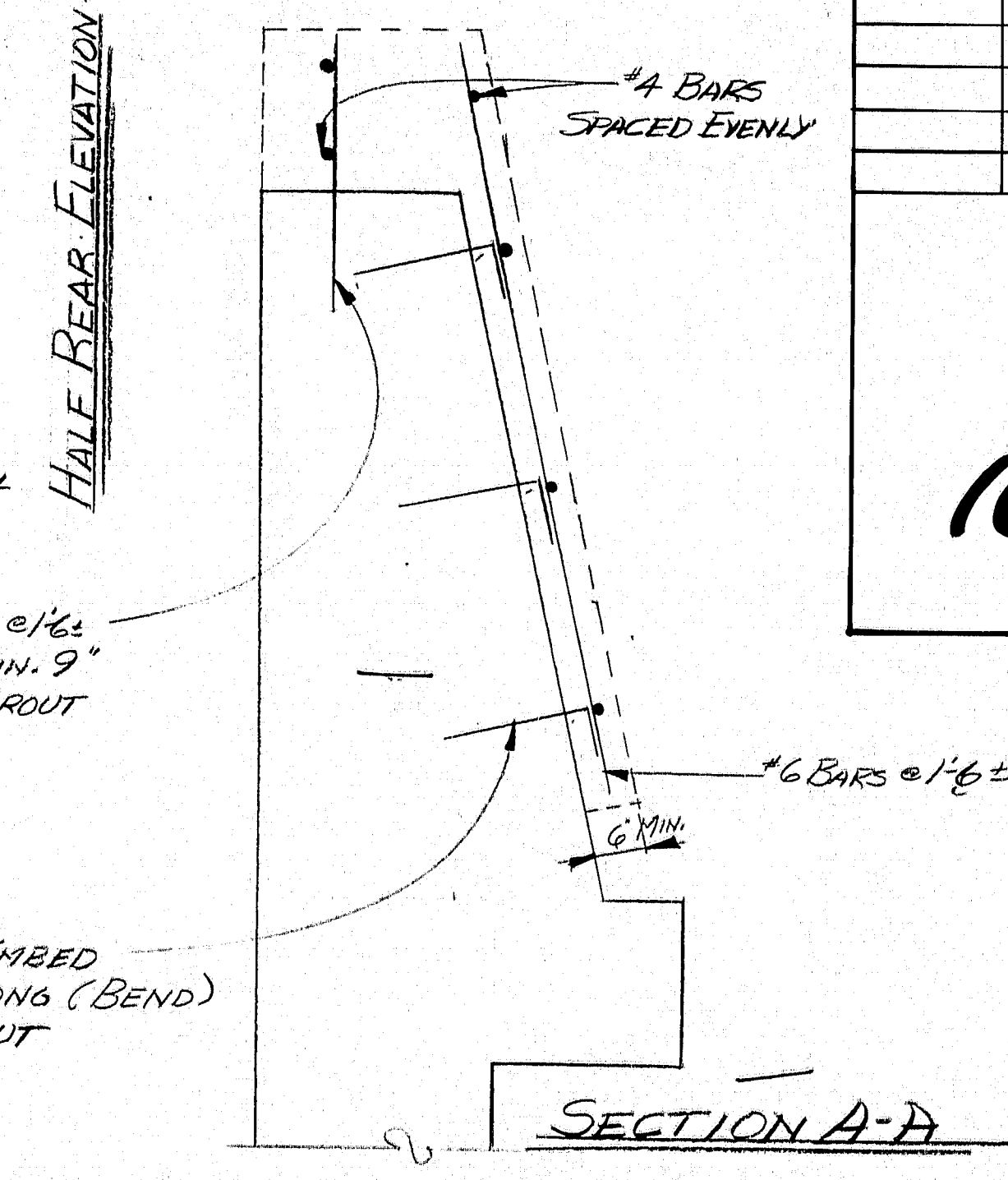
PART LONGITUDINAL SECTION



RAIL POST DETAIL - 10 REO'D

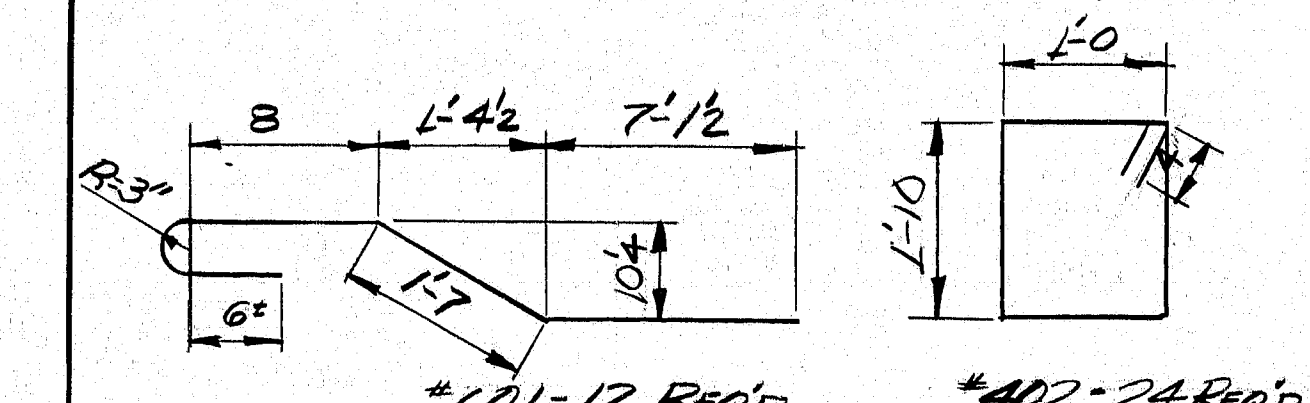


PLAN



SECTION A-A

REINFORCING SCHEDULE



MARK	SIZE	NO.	LENGTH	LOCATION
*401	4	18	3'-0"	SLAB - TRANS. T & B.
*402	4	24	6'-4"	CURB - STIRRUPS
*601	6	4	16'-0"	SLAB - LONG. BOTTOM
*601	6	12	21'-4"	SLAB - LONG.
~	4	12	20'-0"	WINGS - CUT TO FIT IN FIELD
~	6	32	20'-0"	WINGS - CUT TO FIT IN FIELD

* - DENOTES BENT BAR
 ** - CUT TO FIT IN FIELD
 REINFORCING STEEL TO BE GRADE 40 OR 60.
 NOTE: ALL DIMENSIONS ARE CUT OUT OF BARS

REINFORCING EST. WT.				
*401 ~	.668	18	3'	36.1
*402 ~	.668	24	6.3'	101
*601 ~	1.502	4	21.3'	383.9
*602 ~	1.502	12	21'	96.1
FIELD *4 ~	.668	12	20'	160.3
FIELD *6 ~	1.502	32	20'	261.3
EST. TOTAL = 1738.17 LBS.				

MARK	NO.	SHAPE	LENGTH	WT.	REMARKS
Field	10	W6x15.5	16	232.5	
Field	10	R 1 x 7	0'-10"	198.3	
Field	40	#4 BARS	0'-10"	~	"GALVANIZED"

EST. WT. STEEL = 430.8 LBS.

100-430

20 copies sent to L. J. J. 1-16-80

STATE OF MAINE
 DEPARTMENT OF TRANSPORTATION

*2535
 MEADOW BROOK BRIDGE
 OVER
 DEER MEADOW BROOK
 IN THE TOWN OF
 NEWCASTLE
 IN
 LINCOLN COUNTY

WIDENING
 SHEET 1 OF 1 AUGUSTA, MAINE 10/30/80

PROJECT DESIGN ENGINEER	DATE
BY	12-22-80
PLANS	
DESIGN	DETAILED
CHECKED	REVISIONS
FIELD CHANGES	